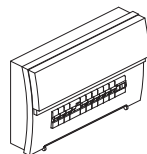


**PART CODE:** TWEM6  
**DESCRIPTION:** 2 x 3W LED Emergency Twin Spot  
 3 Hour Non-Maintained

**FINISH:** White

#### APPROVALS & CLASSIFICATIONS



Always switch off the  
mains supply before  
Installation or Servicing.

#### SUGGESTED METHOD OF INSTALLATION

Read Instructions and check you have all the tools and accessories to complete the installation correctly.

##### STEP 1

Isolate the mains supply before connecting. Unpack the luminaire and check that you have all the tools to install the luminaire safely and in compliance with current electrical standards. Ensure there are no obstructions or services in the way.

##### STEP 2

Un-screw fixings holding the front panel in place, 4 pos'ns.

##### STEP 3

Select a suitable cable entry point in the body of the luminaire and feed the mains cable through the grommet/cable gland to prevent damage to the cable.

##### STEP 4

Position and fix the luminaire body to a suitable solid surface. (a) Drill holes. (b) Fit Rawl Plugs. (c) Fix into position. Do not install this fitting on newly plastered areas. Fix in 4 pos'ns.

##### STEP 5

Ensure that the luminaire has a continuous power supply to the Un-Switched Live. Terminate the mains cable into the terminal block mounted on the PCB ensuring that the correct polarity is observed and the luminaire is fully earthed. Ensure all conductors are fully sleeved and insulated, see FIG.1

##### STEP 6

Ensure that the battery cells are connected.

##### STEP 7

Replace the front panel and secure in place, 4 pos'ns.

##### STEP 8

Turn on mains power supply and test luminaire for correct operation. (May need an initial 24 hours for charging, from new).

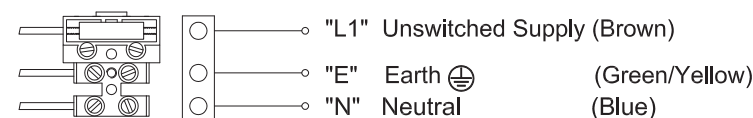
**Hub UK Group Limited**

Company Number: 10005802 www.lighthubdirect.com Tel: 0330 133 1311

This product may contain substances that can be hazardous to the environment if not disposed of properly. Electrical and electronic equipment should never be disposed of with general household waste but must be separated for its correct treatment and recovery. Where possible recycle your packaging.

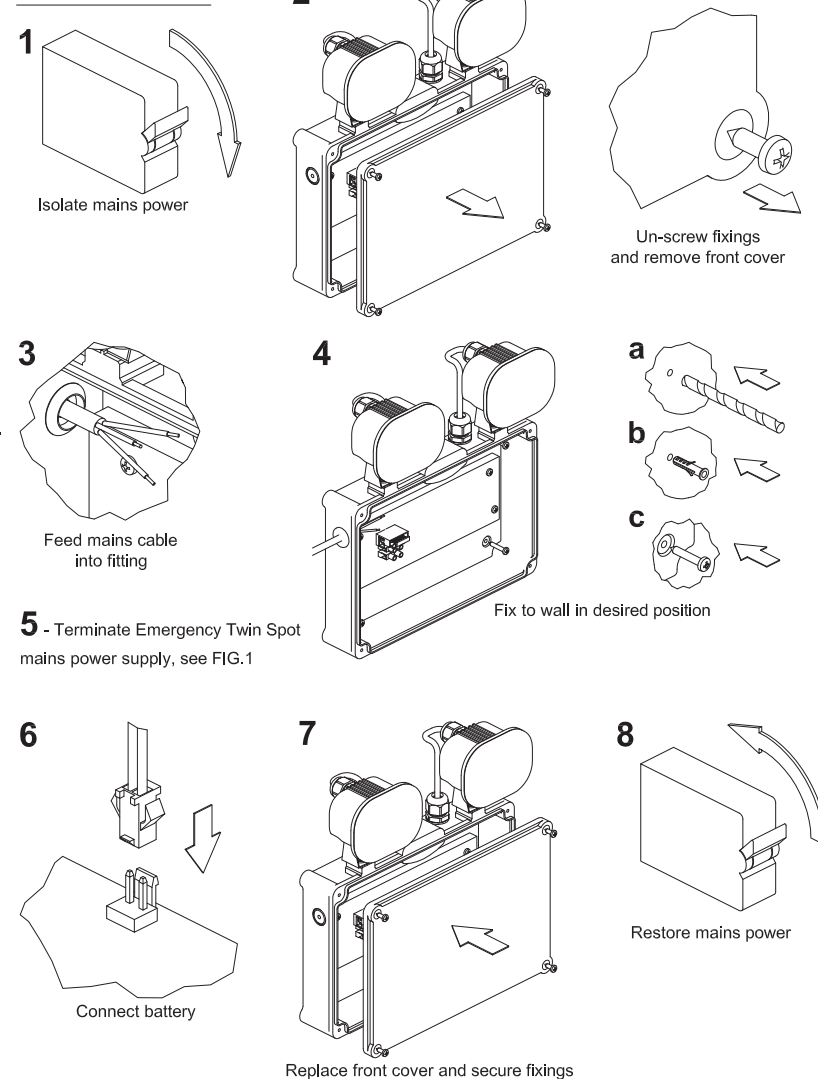


#### EMERGENCY TERMINATIONS (FIG.1)



This is a Class I product and must be Earthed.

#### INSTALLATION



## Installation Sheet

### IMPORTANT INFORMATION

- It is recommended that luminaires are installed and fitted by a qualified electrician ensuring the installation complies to the current IEE wiring regulations.
- These instructions should be read carefully and retained after installation for future reference and maintenance.
- Do not install this product on damp or newly plastered surfaces.
- The LEDs in this fitting are not replaceable.
- Ensure all electrical connections are secure and that there are no loose strands.
- This product is NOT dimmable.
- This is a Class I product and MUST be earthed.

### PRODUCT SPECIFICATION

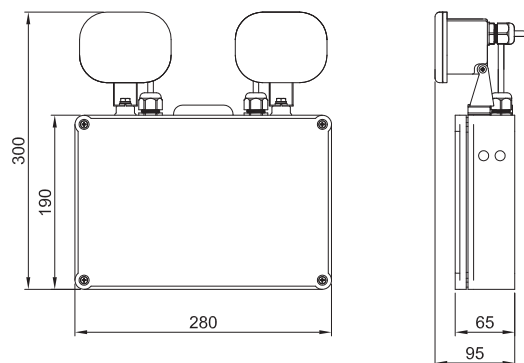
Electrical Classification: Class I

Voltage: 240V / 50Hz

Ingress Protection: IP65

Rated Wattage: 6W Total

### DIMENSIONS



### GUARANTEE

This product is guaranteed for a period of 3 years from the date of purchase. The guarantee is invalid in the case of improper use, improper installations or tampering. Should the product fail during the guarantee period it will be replaced free of charge, subject to correct installation and return of the faulty unit.

The provider is not responsible for any costs associated with the replacement of this product.