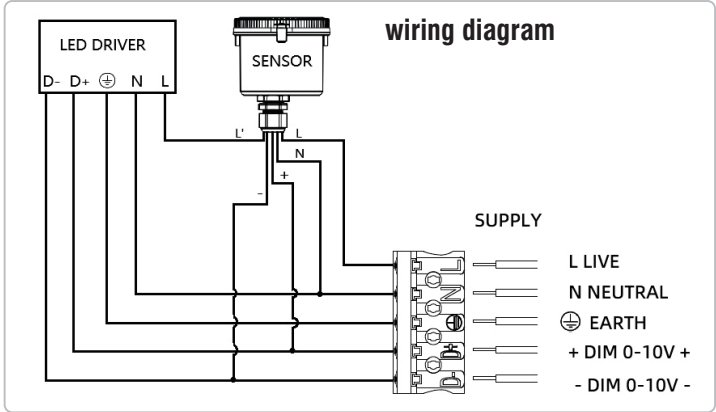
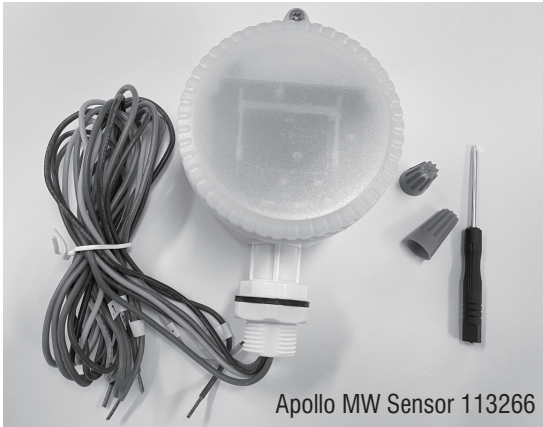


Apollo MW Sensor (not supplied) Installation

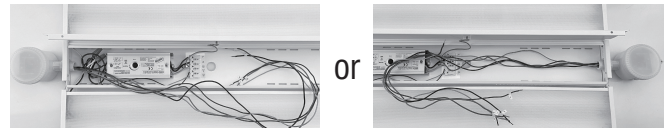
The lamp can be used with Apollo MW Sensor 113266. For more details please see Apollo MW Sensor instruction manual of 113266.



1. Knock out.



2. Fix the sensor at any end.



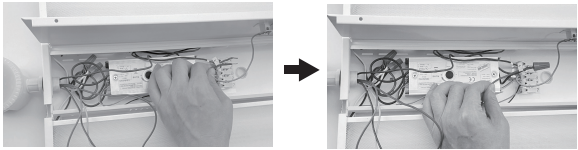
3. Remove Driver input Brown wire from terminal **L** with slotted screwdriver supplied. Or cut off Driver input Brown wire.



4. Insert Sensor Brown wire (**L**) to terminal **L**.



5. Joined Sensor Red wire (**L'**) and Driver input Brown wire together with the insulation cap supplied.



6. Insert Sensor Blue wire (**N**) to terminal **N**.



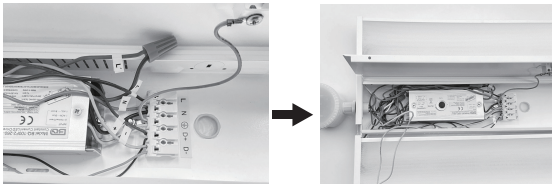
7. Insert Sensor Purple wire (**+**) to terminal **D+**.



8. Insert Sensor Gray wire (**-**) to terminal **D-**.



9. Complete.



Instruction manual

Apollo

107650, 112538



For further information, please visit <https://www.lighting-info.co.uk/107650>

Thank you for purchasing this light fitting. Please read the instructions carefully before use to ensure safe and satisfactory operation of this product. Please retain these instructions for future reference.

Warning

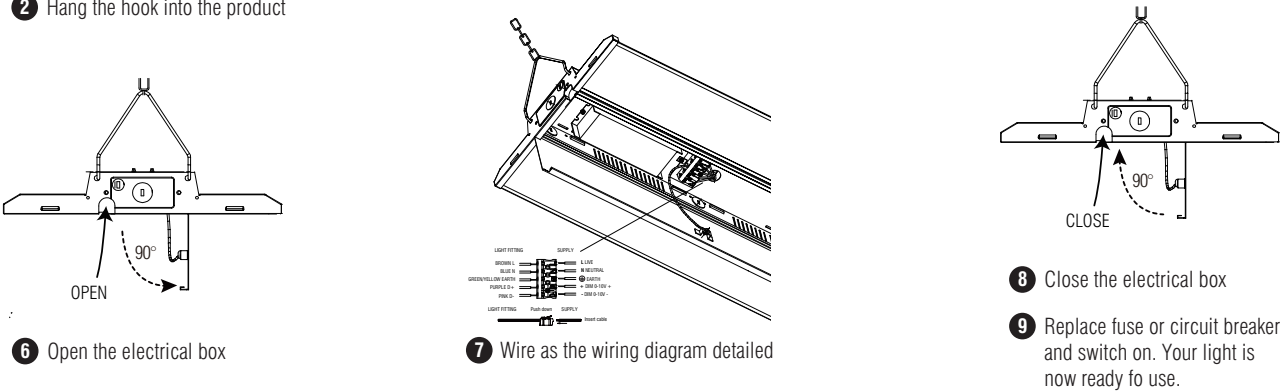
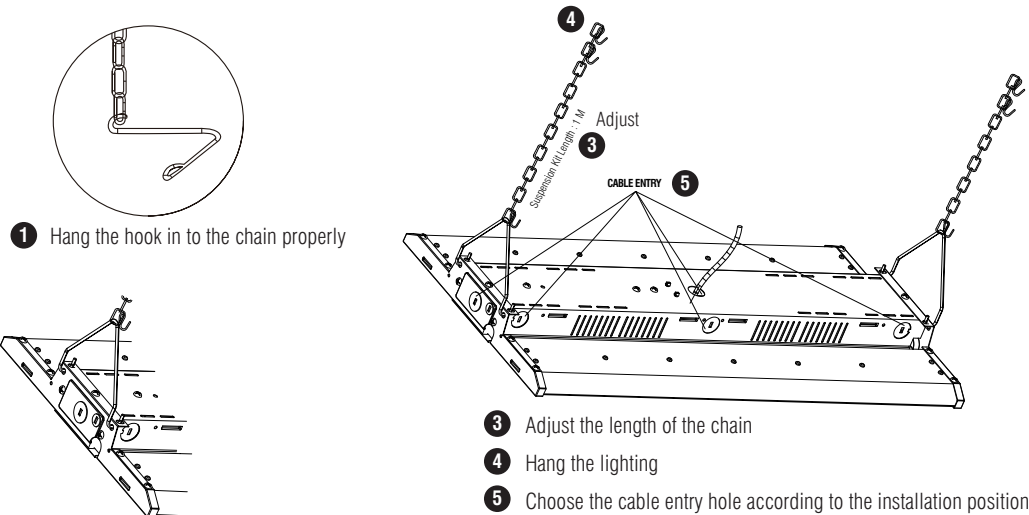
This light fitting is Class 1 product, must be connected to Earth.
Please read these instructions carefully before commencing any work.
This unit must be fitted by a competent and qualified electrician.
Install in accordance with the IEE Wiring regulations and current Building Regulations.
Check the pack and make sure you have all the parts listed.
To prevent electrocution switch off at the mains supply before installing or maintaining this fitting. Ensure other persons cannot restore the electrical supply without your knowledge. If replacing an existing fitting, make a careful note of the connections.
If replacing an existing fitting, make a careful note of the connections.
Never put anything on the product or hang anything on any part of this product.
Never use the terminal cables to bear the product weight.
Waste electrical products should not be disposed of with household waste. Please recycle where facilities exist. Check with your local authority or retailer for recycling advice.

Layout

Plan the desired layout of these fittings carefully, ensuring the cables will reach the distances between light fitting.
Avoid locating any cables in positions that would cause a hazard. Position cables and junction boxes (not supplied) away from areas where they may be at risk from being cut, trapped or damaged.
This unit is suitable for indoor use only.
The mains supply cable must have a minimum cross section area of 1.0mm².
Cables must be protected using suitable conduit or plastic trunking.

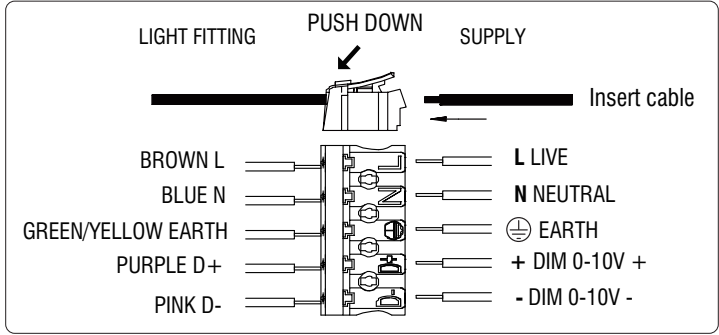
Installation

Existing fittings must be completely removed before installation of a new product. Before removing the existing fitting, carefully note the position of each set of wires.
Note that the switch is turned off before installation.
Ensure the ceiling is capable of holding the weight of the track and products. Take care to avoid damaging any concealed wiring and pipes. The correct fixings should be used for brick, cavity walls or plasterboard.
The chosen location of your fitting should allow for the product to be securely mounted and anchored to a solid surface e.g. concrete, brick or a joist—do not fix directly onto paneling, plasterboard etc.
Do not attach to surfaces which are damp, freshly painted or otherwise electrically conductive (e.g. metallic surfaces).



Wiring

Having correctly identified the wiring from your existing light fitting, connect to the quick fit connection block in the following way:





Check that...

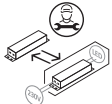
You have correctly identified the wires.
The connections are tight.
No loose strands have been left out of the connection block.

Technical data


Supply Voltage:	220-240 V~, 50 Hz	Bulb Type:	107650: 100W LED, 6000K 112538: 150W LED, 6000K
This product contains a light source of energy efficiency class D .			




Non-replaceable light source




Replaceable control gear by a professional




Conformity with all relevant UKCA Directive requirements.




Conformity with all relevant EC Directive requirements.




The is Class 1 product must be earthed.




Waste electrical products should not be disposed of with household waste. Please recycle where facilities exist. Check with your Local Authority or local store for recycling advice.



This product is suitable for dimming.



Caution! Risk of electric shock!



This product is for indoor use only.

Care and Safety

We recommend cleaning with a soft dry cloth. Do not use solvents or abrasive cleaners as these could damage the finish.
For your safety, always switch off the power supply before cleaning.
Always disconnect the product from mains at least 10 minutes allowing to cool down before any maintenance or adjustment.